

# STANDARDIZED ASSESSMENTS IN THE ORCSD

School Board Presentation

May 4, 2016

## WHY DO WE USE STANDARDIZED ASSESSMENTS?

1. Standardized assessments are designed to be objective measures of student performance.
2. The data gathered allows for comparability of student achievement at local/state/national levels.
3. Accountability is the focus of state and federal policy makers.

STATE REQUIRED:  
SMARTER BALANCED ASSESSMENT CONSORTIUM  
(SBAC)

- Aligned to Common Core Standards.
- Summative assessments done in both math and ELA
- Conducted every spring in grades 3-8.
- Test window set by the DOE.(Generally March to June)
- Total test time is 8-10 hours per student broken into 4-6 sessions.
- Each assessment is broken into two main parts.
  - Computer Adaptive Test (CAT)
  - Performance Task based on a classroom activity(PT)

STATE REQUIRED: SCIENCE NECAP

- Summative assessment conducted in May for grades 4, 8 and 11.
- Total time of test is 1 1/2 to 2 1/2 hours per student.
- DOE is wrestling with science assessment as NECAP is based on older standards.
- Move to Next Generation Science Standards will eventually have an impact on Science NECAPs.

## STATE REQUIRED: PSAT/SAT AT HIGH SCHOOL LEVEL

- In 2016 PSAT/SAT replaced SBAC at the high school.
- New versions of PSAT/SAT are aligned with the Common Core Standards.
- ORHS 11<sup>th</sup> graders also do the essay portion of the SAT which is not required by state.
- All ORHS 10<sup>th</sup> graders take the PSAT.
- All ORHS 11<sup>th</sup> graders take the SAT.
- Total test time is 4 hours per student.

## LOCALLY ADMINISTERED: STAR MATH AND READING ASSESSMENTS

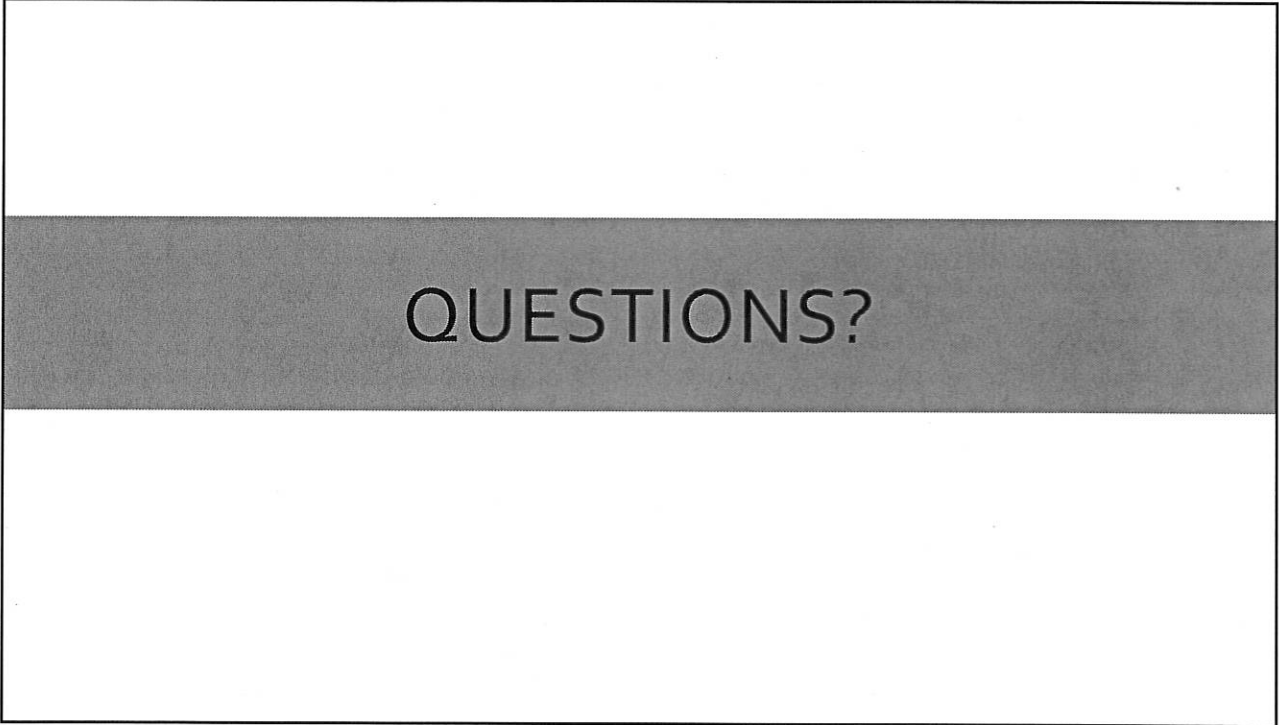
- STAR is a formative assessment aligned with Common Core math and reading standards.
- Conducted 3 times a year in grades 2-9 with progress monitoring in 10<sup>th</sup> grade.
- Each assessment takes 20-30 minutes.
- Total time of assessment is 2-3 hours per student per year.

## LOCALLY ADMINISTERED: FONTAS AND PINNELL BENCHMARK READING ASSESSMENT

- Benchmark is formative assessment done at Mast Way and has been adopted for 2016-17 at the Moharimet School.
- Developmental Reading Assessment (DRA) has been done at Moharimet through 2015-16 but will be replaced by Benchmark next year.
- Conducted in grades K-4.
- Assessment conducted 2-3 times a year and takes 15-45 minutes per student per assessment.

## ORCSD USES OF STANDARDIZED TEST DATA

- Response To Intervention(RTI) and student support teams across the district utilize the data to improve instruction for all students at the classroom level.
- Individual student supports are targeted and monitored through standardized data collection and analysis.
- Individual teachers have access to student data to inform classroom instruction via PowerSchool Analytics.
- Once we have 3 years of SBAC data it will be able to be used to support curriculum review and development.



OYSTER RIVER COOPERATIVE SCHOOL DISTRICT

OFFICE OF THE SUPERINTENDENT

36 Coe Drive

Durham, New Hampshire 03824

Telephone: 603-868-5100

Facsimile # 603-868-6668

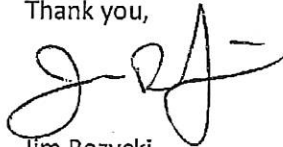
---

May 4<sup>th</sup> 2016

Regarding – Mast Way Boiler room bid award

It is my recommendation we award the Mast Way Boiler Renovation project to Comfort Systems. Though we have never used Comfort Systems in Oyster River, they were the lowest bidder and after checking several references with other contractors and school districts, I feel it would be a good opportunity to diversify our contractor mix. The cost savings will be used for replacing an electric hot water tank that services the north corner restrooms, upgrading a Siemens automation panel, and overall project contingency.

Thank you,



Jim Rozycki  
Director of Facilities